

BATON ROUGE CITY COURT

Revised August 12, 2009

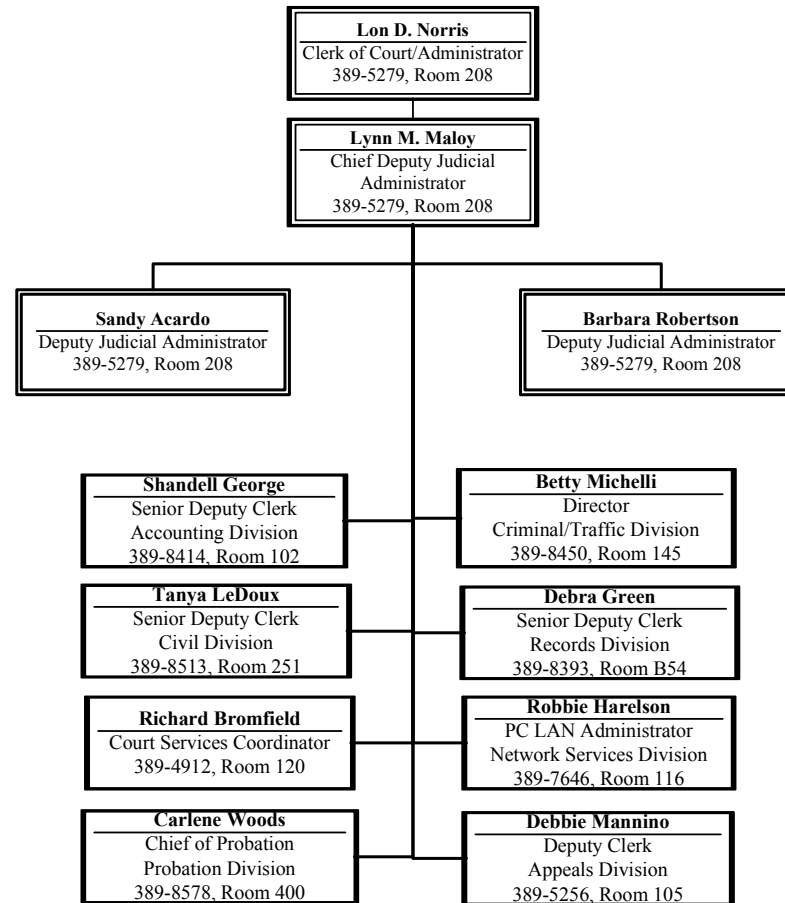
DIVISION A
Judge Laura P. Davis
389-3021, Room 228

DIVISION B
Judge Kelli Terrell Temple
389-3025, Room 232

DIVISION C
Judge Alex "Brick" Wall
389-3346, Room 240

DIVISION D
Judge Yvette M. Alexander
389-5006, Room 219

DIVISION E
Judge Suzan S. Ponder
389-3095, Room 248



AFFILIATED AGENCIES

Reginald Brown
City Constable
389-3004, Room B43

Art Boudreaux
City Prosecutor
389-3119, Room 255

Jackie Culotta
Public Defender's Office
389-5426, Room 124

Fletcher R. Bell
Pretrial Diversion
389-8579, Room 404